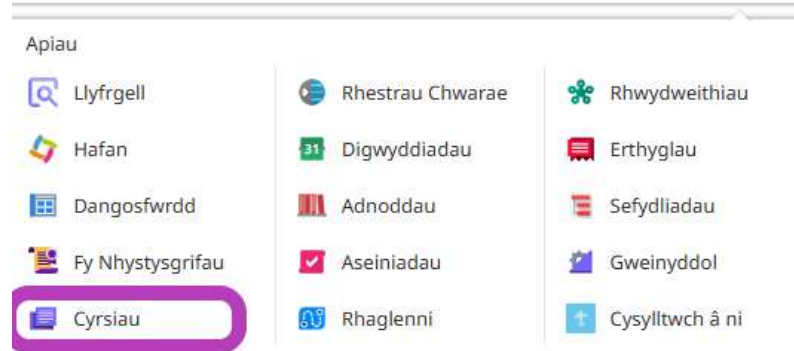
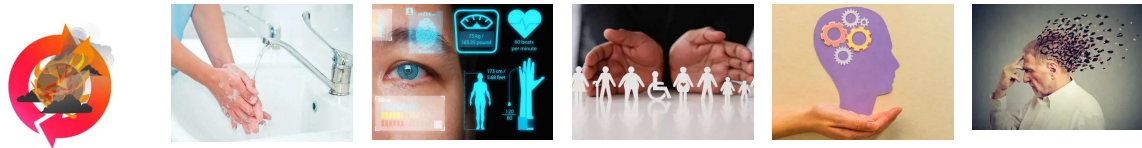


I gael mynediad at gyrsiau:

- Mewngofnodwch i Y Ty Dysgu
- Ewch i 'apiau'
- Cliciwch ar 'cyrsiau'
- Hidlwch Optometreg ar yr ochr chwith



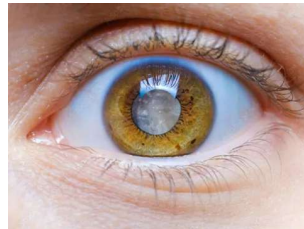
Holl Ddefnyddwyr Optometreg:



<u>Llythrennedd Carbon a Chynaliadwyedd mewn Optometreg - 1 Pwynt DPP</u>	<u>Ymwybyddiaeth o Dementia - 1 Pwynt DPP</u>	<u>Ymwybyddiaeth o Gydraddoldeb, Amrywiaeth a Chynhwysiant - 1 Pwynt DPP</u>
<u>Rheoli Atal Heintiau a Diogelwch Offer Miniog - 1 Pwynt DPP</u>	<u>Gwella Ansawdd Gyda'n Gilydd - Sefydliadau Gwella - 1 Pwynt DPP</u>	<u>Gwneud i Bob Cyswllt Gyfrif (GBCG/MECC) - 1 Pwynt DPP</u>
<u>Cynnal bywyd sylfaenol - 1 Pwynt DPP</u>	<u>WGOS Trosolwg - 1 Pwynt DPP</u>	<u>Hyfforddiant Llythrennedd Sylfaen Iechyd Meddwl - Haen 1 -</u>

<u>Llythrennedd Carbon a Chynaliadwyedd mewn Optometreg - 1 Pwynt DPP</u>	<u>Ymwybyddiaeth o Ddementia - 1 Pwynt DPP</u>	<u>Ymwybyddiaeth o Gydraddoldeb, Amrywiaeth a Chynhwysiant - 1 Pwynt DPP</u>
		<u>Optometreg - 1 Pwynt DPP</u>

Optometreg - Optometryddion, OMPs, Optometryddion Cyn-gofrestru, Optegwyr Cyflenwi ac Optegwyr Lensys Cyffwrdd:



- [Senarios achos cataract](#) - 1 Pwynt DPP



- [Cyflwyniadau Achos Glawcoma](#) - 1 Pwynt DPP

Optometryddion ac Optegwyr Cyflenwi:



<u>Hyfforddiant Cyffredinol Golwg Gwan ac Iselder - 1 Pwynt DPP</u>	<u>WGOS 3 Patholeg Oedolion LVSW - 1 Pwynt DPP</u>	<u>WGOS 3 Rhaeadr LVSW - 1 Pwynt DPP</u>
<u>WGOS 3 Lens Peli LVSW - 1 Pwynt DPP</u>	<u>WGOS 3 Iselder LVSW - 1 Pwynt DPP</u>	<u>WGOS 4 Meddygol Retina + - 1 Pwynt DPP</u>

Aml-broffesiynol:

Mae'r cyrsiau isod ar gael i bob aelod o staff optometreg ar Y Ty Dysgu. Er **nad ydynt wedi'u hachredu ymlaen llaw ar gyfer pwyntiau DPP**, gall ymarferwyr hawlio DPP hunangyfeiriedig ar gyfer unrhyw gwrs sy'n cyfrannu at eu datblygiad proffesiynol.

Cofiwch: *mae unrhyw* ddysgu perthnasol sy'n gwella eich sgiliau neu'ch gwybodaeth yn gymwys ar gyfer DPP hunangyfeiriedig, ar yr amod y gallwch ddangos sut mae'n cefnogi eich ymarfer. Yr hyn sydd bwysicaf yw eich bod chi'n cael mewnwediadau y gallwch chi eu defnyddio yn eich gwaith proffesiynol.

Am fanylion llawn, gweler:

DPP: Canllaw i Gofrestreion

<u>Sylfeini Deallusrwydd Artiffisial (AI) mewn Gofal Iechyd</u>	<u>Rhagnodi gwrthfotigau wrth gefn</u>
<u>Health Inequality</u>	<u>Antimicrobial Stewardship and Resistance for Prescribers</u>

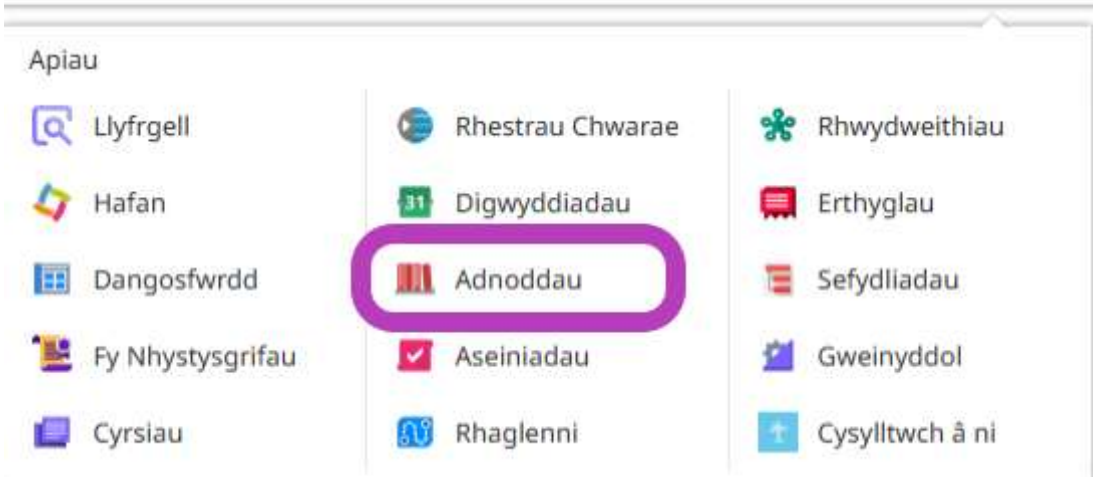
Adnoddau:

Rydym yn cynnal cyfoeth o adnoddau ar Y Ty Dysgu y gallwch gael mynediad atynt.

I gael mynediad at adnoddau:

- Mewngofnodwch i Y Ty Dysgu
- Ewch i 'apiau' a dewiswch 'Adnoddau'
- Hidlwch 'Optometreg' ar yr ochr chwith

Apiau 



Apiau

- Llyfrgell
- Hafan
- Dangosfwrdd
- Fy Nhystysgrifau
- Cyrsiau
- Rhestrau Chwarae
- Digwyddiadau
- Adnoddau**
- Aseiniadau
- Rhaglenni
- Rhwydweithiau
- Erthyglau
- Sefydliadau
- Gweinyddol
- Cysylltwch â ni

Adnoddau sydd ar Gael:

- Llawlyfrau Gwasanaeth WGOS
- Pecyn Cymorth Rhagnodi Annibynnol
- Gwella: Llygad ar arweinyddiaeth
- Optometreg - Cynaliadwyedd
- Gweld yn Glir: Optimeiddio taith niwroamrywiol y claf mewn gwasanaethau gofal llygaid (Cynhadledd AaGIC: Optometreg 360)

Tystysgrifau DPP

I lawrlwytho eich tystysgrif DPP:



WGOS Compliance Programme

This Programme allows you to complete the 4 pre-requisite courses in order to gain the compliance certificate.

Work your way through the 4 courses below, in any order you wish. Please be aware there is a multiple choice assessment within each course, where you must gain 60% or more to pass.

Once you have completed all 4 courses you will be awarded the compliance certificate.

[Awarded!](#) [Download latest certificate](#)

Share

- Mewngofnodwch i Y Ty Dysgu
- Ewch i 'proffil'
- Cliciwch ar 'ardystiadau'
- Cliciwch ar yr eicon yr hoffech ei lawrlwytho

Nodyn(au) atgoffa:

Rhaid i chi gadw eich manylion yn gyfredol ar Y Ty Dysgu, gallai hyn gynnwys:

- Bwrdd Iechyd
- Cyfeiriad y Practis
- Rôl (e.e. o Optometrydd Cyn-gofrestru i Optometrydd)

I ddiweddarw eich gwybodaeth:

- Mewngofnodwch i Y Ty Dysgu

- Ewch i'r proffil
- Dewiswch y cog
- Dewiswch y tab 'Gwybodaeth Broffesiynol'
- **ARBEDWCH** unrhyw newidiadau

Bio Llundain Baner Dewisiadau **Signup** Arbenigedd Cyfrinair MFA

Proffesiwn a Rôl Swydd

Mae angen y maes hwn

Os bydd unrhyw ran o'ch gwybodaeth yn newid, cysylltwch â heiw.ytydysgu@wales.nhs.uk

Optometreg ×

Optometrydd ×

Math o rif cofrestru proffesiynol

Mae angen y maes hwn, Uchafswm o 100 cymeriadau

Dewiswch dim cofrestriad os yn berthnasol

GOC - Cyngor Optegol Cyffredinol (Optometrydd) × 01-00000

Ym mha fwrdd iechyd / sefydliad ydych chi'n gweithio'n bennaf?

Mae angen y maes hwn

Health Education and Improvement Wales (HEIW) ×

Enw a chyfeiriad y gweithle

Mae angen y maes hwn, Uchafswm o 500 cymeriadau

Rhowch enw a chyfeiriad eich prif weithle (practis, ysbyty, meddygfa ac ati)

Health Education Improvement Wales
EXAMPLE

Cod post gweithle

Mae angen y maes hwn, Uchafswm o 100 cymeriadau

EXAMPLE

Telephone number

Uchafswm o 100 cymeriadau

EXAMPLE

Secondary profession and job role (if applicable)

Only users who have a dual profession or role need to complete this field

Cadw

canslo

nwssp-primarycareservices@wales.nhs.uk
Ymholiadau clinigol WGOS neu ymholiadau ynghylch rheolaeth WGOS

HEIW.OptometryLowVision@wales.nhs.uk
Hyfforddiant ac achrediad Golwg Gwan

Low.vision@wales.nhs.uk
Gwasanaeth Golwg Gwan Cymru - ymholiadau clinigol, ar sail rheolaeth neu ddarpariaeth gwasanaethau

Os nad ydych yn dymuno clywed gennym bellach, gallwch ddad-danysgrifio o'n holl ddiweddariadau.

HEIW, Ty Dysgu, Cefn Coed, Nantgarw, CF15 7QQ

Polisi preifatrwydd

Optometry newsletter

A Y Ty Dysgu Focus - Autumn 2025

Sgrolwch i fyny am y Gymraeg

Y Ty Dysgu

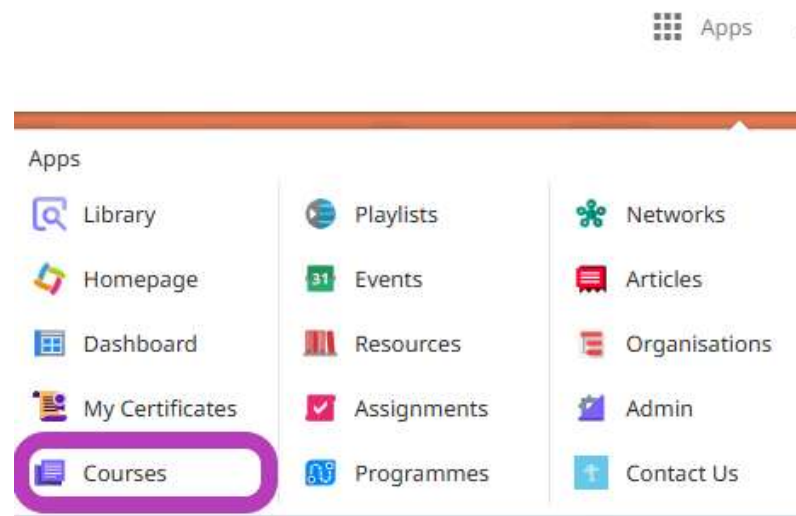


This newsletter edition highlights Y Ty Dysgu and provides the latest updates on what's currently available.

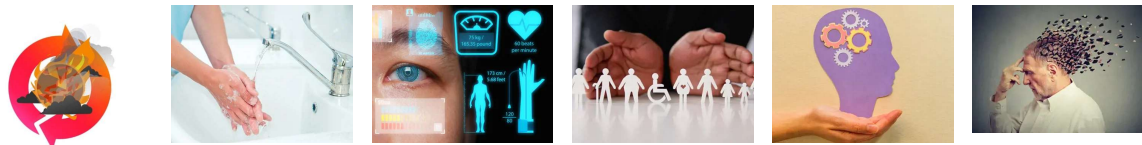
Courses Available on Y Ty Dysgu:

To access courses:

- Log in to Y Ty Dysgu
- Go to 'apps'
- Click on 'courses'
- Filter Optometry on the left hand-side

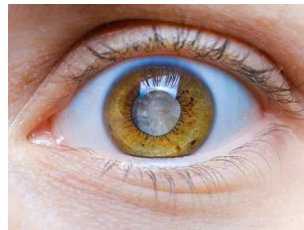


All Optometry Users:



<u>Carbon Literacy & Sustainability in Optometry</u> - 1 CPD Point	<u>Dementia Awareness</u> - 1 CPD Point	<u>Equality, Diversity & Inclusion Awareness</u> - 1 CPD Point
<u>Infection Prevention Control Sharps Safety</u> - 1 CPD Point	<u>Foundations in Improvement</u> - 1 CPD Point	<u>Making Every Contact Count</u> - 1 CPD Point
<u>Basic Life Support</u> - 1 CPD Point	<u>WGOS Overview</u> - 1 CPD Point	<u>Mental Health Foundation Literacy Training - Tier 1 - Optometry</u> - 1 CPD Point

Optometry - Optometrists, OMPs, Pre-Reg Optometrists, Dispensing Opticians & Contact Lens Opticians:



- [Cataract Case Scenarios](#) - 1 CPD Point



- [Glaucoma Case Scenarios](#) - 1 CPD Point

Optometrists and Dispensing Opticians:



<p><u>Low Vision Depression General Training - 1 CPD Point</u></p>	<p><u>WGOS 3 LVSW Adult Pathology - 1 CPD point</u></p>	<p><u>WGOS 3 LVSW Child Pathology - 1 CPD point</u></p>
<p><u>WGOS 3 Peli Lenses - 1 CPD point</u></p>	<p><u>WGOS 3 LVSW Falls - 1 CPD point</u></p>	<p><u>WGOS 4 Medical Retina + - 1 CPD Point</u></p>

Multi-Professional:

The below courses are accessible to all optometry staff on Y Ty Dysgu. While they are **not pre-accredited for CPD points**, practitioners may **claim self-directed CPD** for any course that contributes to their professional development. Remember: *any* relevant learning that enhances your skills or knowledge is eligible for self-directed CPD, provided you can show how it supports your practice. What matters most is that you gain insights you can apply in your professional work.

For full details, see:

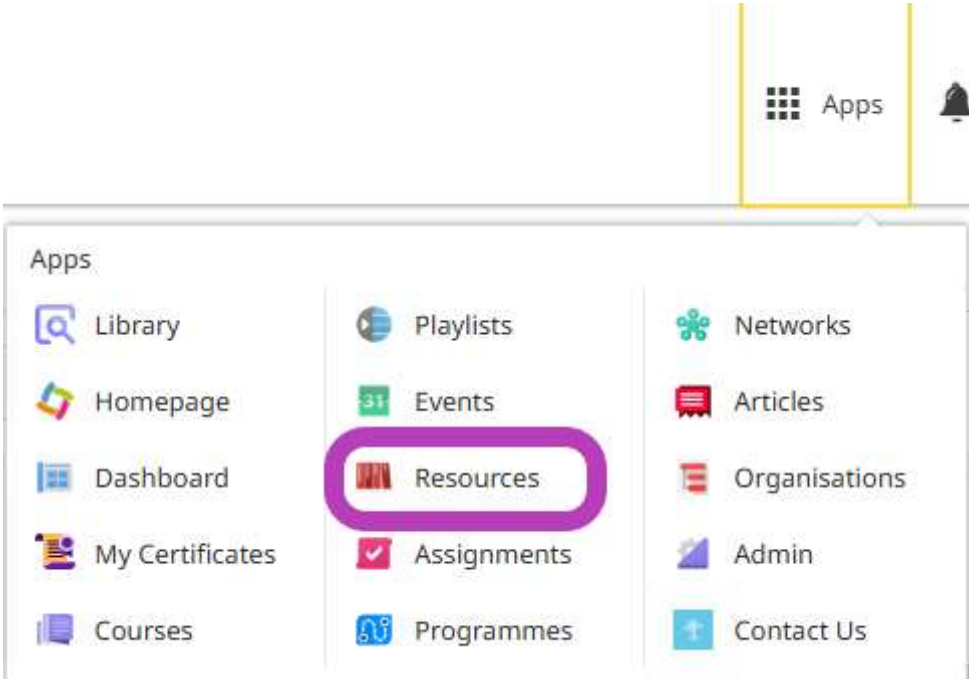
<u>Foundations of AI in Healthcare</u>	<u>Back-up Antibiotic Prescribing</u>
<u>Health Inequality</u>	<u>Antimicrobial Stewardship and Resistance for Prescribers</u>

Resources:

We host a wealth of resources on Y Ty Dysgu that you can access.

To access resources:

- Log-in to Y Ty Dysgu
- Go to 'apps' and select 'Resources'
- Filter 'Optometry' on the left hand-side



Resources Available:

- WGOS Service Manuals
- Independent Prescribing Toolkit
- Gwella: An eye on leadership
- Optometry - Sustainability
- Seeing Clearly: Optimising the neurodivergent patient journey in eyecare services (HEIW Conference: Optometry 360)

CPD Certificates:

To download your CPD certificate:



WGOS Compliance Programme

This Programme allows you to complete the 4 pre-requisite courses in order to gain the compliance certificate.

Work your way through the 4 courses below, in any order you wish. Please be aware there is a multiple choice assessment within each course, where you must gain 60% or more to pass.

Once you have completed all 4 courses you will be awarded the compliance certificate.

[Download latest certificate](#)

Share

- Log-in to Y Ty Dysgu
- Go to 'profile'
- Click 'certifications'
- Click on the icon you wish to download
- 'download latest certification'

Reminder(s):

You must keep your details up to date on Y Ty Dysgu, this might include:

- Health Board
- Practice Address
- Role (e.g. from Pre-Reg Optometrist to Optometrist)

To update your information:

- Log-in to Y Ty Dysgu
- Go to profile
- Select the cog
- Select 'Professional Information' tab
- **SAVE** any changes

Bio Picture Banner Preferences Professional information Expertise Password MFA

Primary profession and job role

This field is required

If any of the information you have entered changes, please contact heiw.ytydysgu@wales.nhs.uk

Optometry ✕

Optometrist ✕

Professional registration number type

This field is required, Maximum of 100 characters

Please select no registration if applicable

GOC - General Optical Council (Optometrist) ✕ 01-00000

Which health board / organisation do you mainly work in?

This field is required

Health Education and Improvement Wales (HEIW) ✕

Workplace name and address

This field is required, Maximum of 500 characters

Please enter the name and address of your main place of work (practice, hospital, surgery etc)

Health Education Improvement Wales
EXAMPLE
EXAMPLE

Workplace postcode

This field is required, Maximum of 100 characters

EXAMPLE

Telephone number

Maximum of 100 characters

EXAMPLE

Secondary profession and job role (if applicable)

Only users who have a dual profession or role need to complete this field

Save

Cancel

heiw.optometry@wales.nhs.uk
Any queries or WGOS training and accreditation

nwssp-primarycareservices@wales.nhs.uk
WGOS clinical or WGOS management queries

HEIW.OptometryLowVision@wales.nhs.uk
Low Vision training and accreditation

Low.vision@wales.nhs.uk
Low Vision Service Wales - clinical, management or service delivery queries

If you no longer wish to hear from us, you can unsubscribe from all our updates.

HEIW, Ty Dysgu, Cefn Coed, Nantgarw, CF15 7QQ

[Privacy policy](#)

SENT BY **Tractivity**[®]