



GIG
CYMRU
NHS
WALES

Addysg a Gwella Iechyd
Cymru (AaGIC)
Health Education and
Improvement Wales (HEIW)

How did we get there?

Denise Parish

Head of Pre-Registration Healthcare
Professional Education Commissioning and
Quality

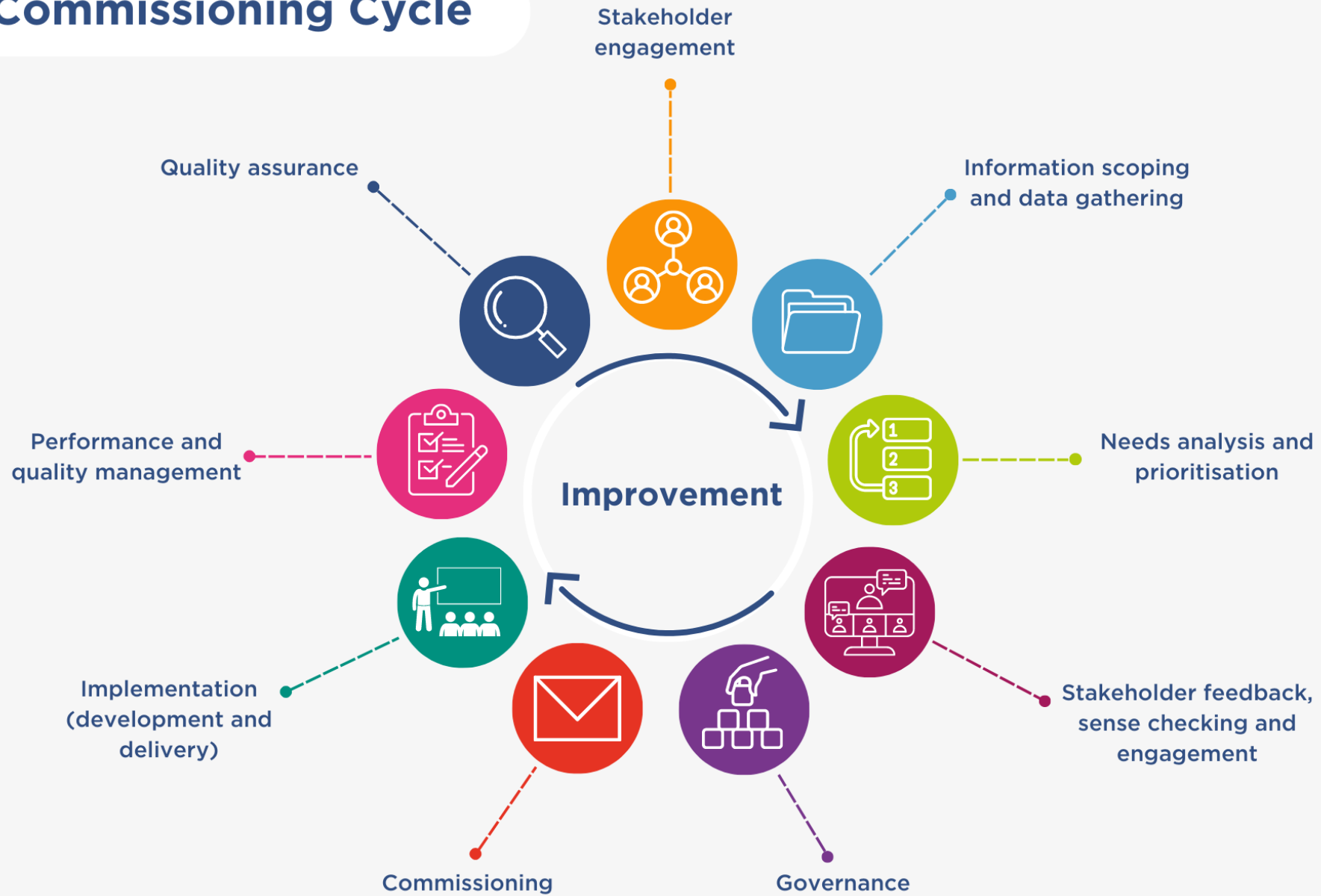
As a novice practitioner



Becoming an effective practitioner



Commissioning Cycle



Contractual requirements

- IPE experiences embedded throughout the Programme at all levels of study that meet the WHO definition of IPE
- Constitute a minimum contribution of 20% of the Student learning experience
 - The number of academic credits, and/or;
 - The learning outcomes, and/or;
 - Learning hours.
- The opportunity to work collaboratively with the professional groups that they are likely to work with in their future careers
- Identify the professional groups that their Students would benefit from working with from outside of their portfolio of training Programmes. They should then aim to work with some partner institutions that deliver IPE across a reasonable range of professions.
- 4 weeks of interprofessional placement





GIG
CYMRU
NHS
WALES

Addysg a Gwella Iechyd
Cymru (AaGIC)
Health Education and
Improvement Wales (HEIW)

Trawsnewid y gweithlu ar gyfer Cymru iachach
Transforming the workforce for a healthier Wales



IPE Placements



GIG CYMRU NHS WALES | Addysg a Gwella Iechyd Cymru (AaGIC) Health Education and Improvement Wales (HEIW)

These interprofessional placement learning principles have been coproduced with key education and placement provider stakeholders and endorsed by HEIW.

All-Wales principles for interprofessional placement learning experiences

In relation to the HEIW Strategic review of education and implementation of new education contracts

Sept 2022



IPE placement Working Group Priorities

Three priorities in Wales identified through IPE Working Group:

1. Build Practice educator confidence in IPE placement management.
2. Capitalise on opportunities to facilitate an All-Wales approach to delivery of the IPE Placement learning.
3. Evaluate and celebrate the impact of the IPE Placements development in Wales.





#IPECymru

